

Video Software Control User Guide



1. Device and Tool Preparation

1.1 Please prepare following devices and tools before using Video Software Control.

- ①  CV Camera

- ②  PC with a RS232 port or Laptop

- ③  RS232 cable
(9 Pin D-Sub Female to 8 Pin Mini Din Male)

- ④  RS232-USB cable
(if connect with a laptop)

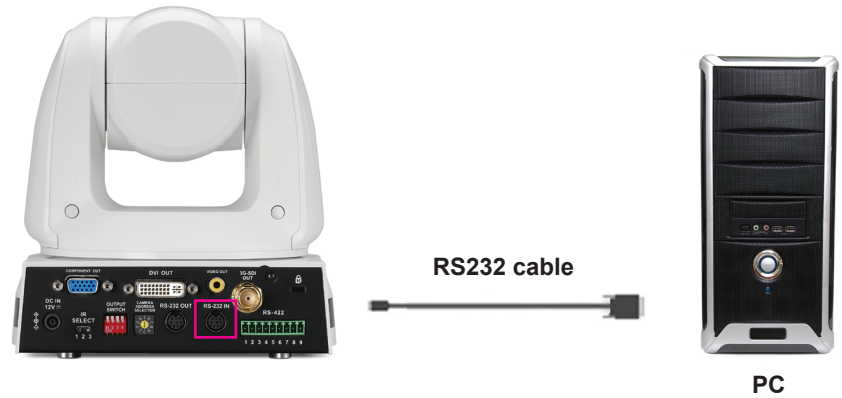
- ⑤  Monitor

- ⑥  Power adapter and power cord

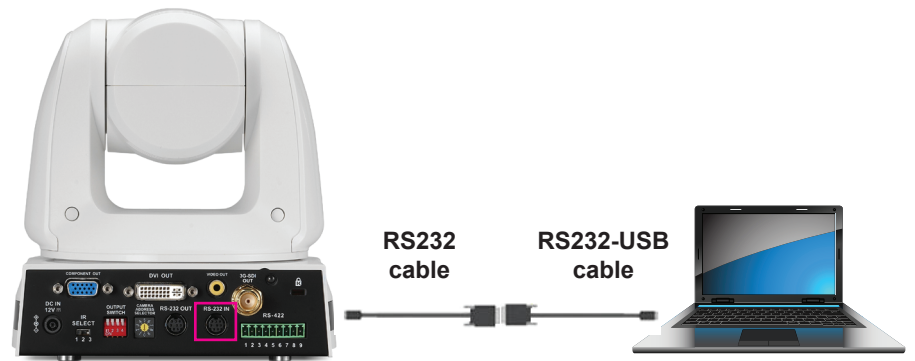
2. Connections with PC

****Note: OS Support: Windows Vista, Windows XP, Windows 7, Windows 8
The Video Conference Application is not compatible with MAC OS.**

2.1 Connect the CV620 camera (RS232 In) with a PC



2.2 Connect the CV620 camera (RS232 In) with a laptop.
Need 2 cables: RS232 cable and RS232-USB cable



3. Install Video Software Control

****Note:** Video Software Control is for testing RS232 function only. Please DON'T use it as commercial purpose.

3.1 Please download Video Software Control from below link:
http://www.lcdracks.com/servers-cameras/HD-SDI-cameras/software/Video_Conference_AP_for_User.zip

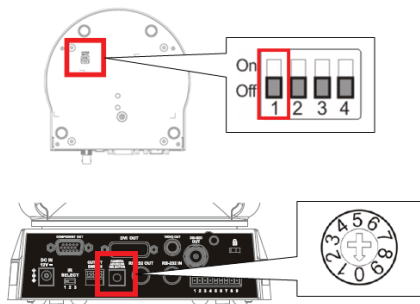
3.2 Extract the file downloaded and then click [setup.exe] to install.

3.3 The installation wizard will guide you through the process. Please follow the on-screen instructions and press [Next] for the next step.

4. Connection with Video Software Control

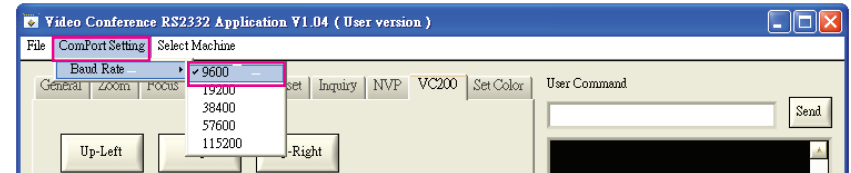
****Note:** Before connection, please check following settings are correct.

1. "System DIP Switch" on the bottom, DIP 1 set at OFF which is for RS232 control.
2. "Camera Address Selector" set at 0 position.



2. Connections with PC

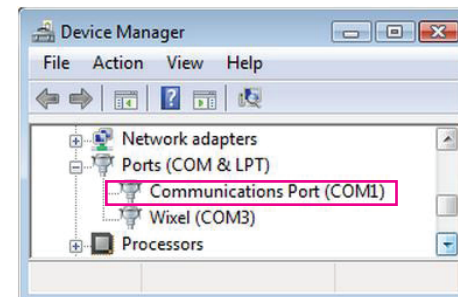
- 4.1 Launch the [Video Conference AP]
- 4.2 Select [ComPort Setting] page: [Baud Rate] select 9600



- 4.3 Select [Select Machine] page: select VCA50



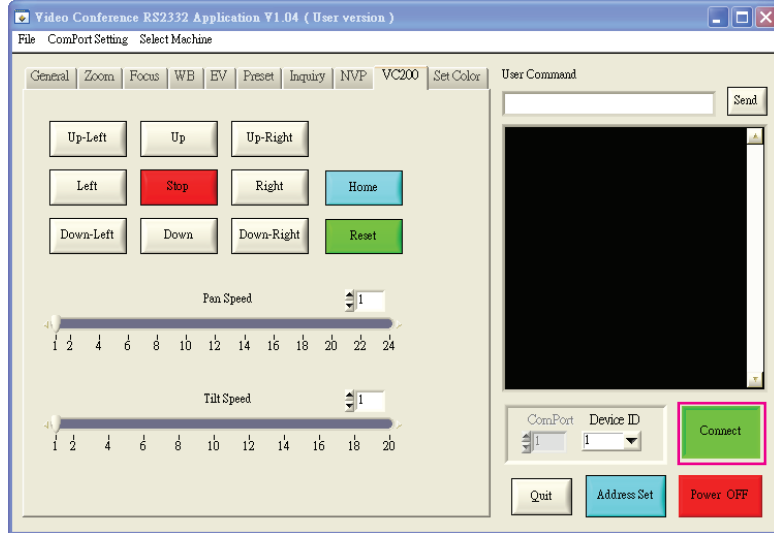
- 4.4 [ComPort]: Please go to [Device Manager] to select correct COM port connected with camera.



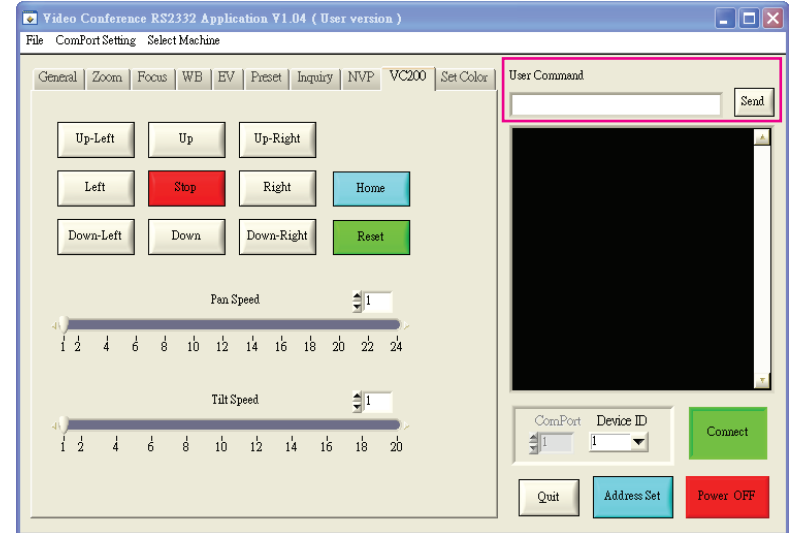
- 4.5 [Device ID]: Select 1 if only connecting a camera. If you connect two or above cameras, please select the camera number you want to control.



4.6 After setting [ComPort] & [Device ID], please press [Disconnect] button to connect. The button color will turn to green if connection is successful.

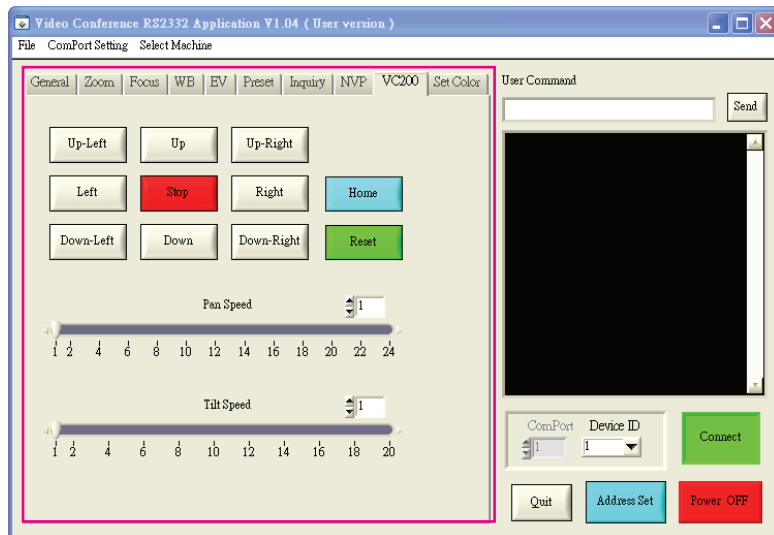


5.2 User Command: According to RS232 command list to enter the command to control camera.

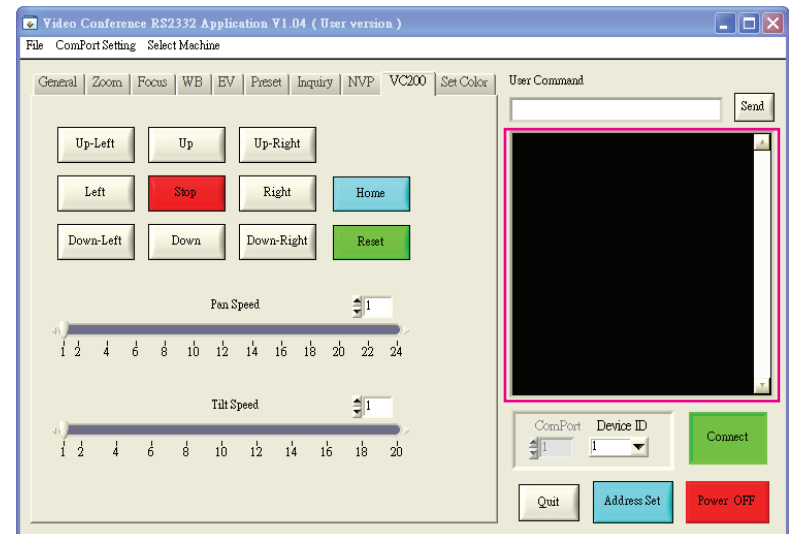


5. Video Software Control Introduction

5.1 Command page: Select the RS232 command to control the camera.



5.3 Command Display Window: Show the message of RS232 command.



5.4 Other functions:

5.4.1 **Power OFF:** Turn off the camera by press the button.

5.4.2 **Address Set:** When connecting more than 1 cameras, press [Address Set] to set the camera ID automatically. (Need to set the “Camera Address Selector” of all cameras at 0 position.)

5.4.3 **Quit:** Quit from application.

Marshall Electronics, Inc.

1910 East Maple Ave. El Segundo, CA 90245

Tel: (800) 800-6608 • (310) 333-0606

Fax: 310-333-0688

www.LCDracks.com

support@marshall-usa.com